

B.A. Construction Management Online

(Standard Rate: \$400/semester hour)



Build a Successful Career in Construction Management

Rowan University's B.A. in Construction Management Online is designed as a degree completion program for individuals with experience in the construction field who already have an associate's degree or equivalent number of credits. Applicants with less than 60 credits may work with an enrollment counselor to explore available options.

- Created in cooperation with the North America's Building Trades Unions (NABTU)
- 100% online courses with opportunities to interact with faculty each week via web conferencing
- Accelerated time to completion
- Academic credit towards the degree may be awarded for prior work (including apprenticeship) and experience
- Ranked #3 Best Online Construction Management Bachelor's Degree by College Choice



Rowan University Fast Facts

- Designated the second comprehensive public research university in N.J.
- Provides a wide range of degrees, from bachelors through doctoral, to more than 18,000 students
- Located in Glassboro, N.J.
- Consists of ten colleges, including two medical schools
- Offers academic programs in multiple locations as well as online
- Created hundreds of construction and retail jobs through the expansion of its campus

Scholarships

The North America's Building Trades Unions Governing Board of Presidents' Scholarship Program was established at the Rowan University Foundation in Fall of 2016 to support the Bachelor of Arts in Construction Management program. The scholarship is available through the Office of Admissions for NABTU-affiliated Building Trades Union members in good standing. The scholarship is up to \$7,200 per student per year. The only non-members eligible for the scholarships are staff members from the 14 Building Trades affiliates or Helmets to Hardhats, affiliated with NABTU limited to availability.

About the Program

The Henry M. Rowan College of Engineering, a nationally ranked college of engineering education that prepares students for local, regional, and global industries through innovative technologies and engineering practices in partnership with the Division of Global Learning and Partnerships, Rowan University's vehicle to serve the needs of working adults and lifelong learners through innovative academic programs and industry partnerships proudly offer the BA in Construction Management Online Program to journeypersons and seasoned construction professionals as well as apprentices interested in combining building and construction trade experience with knowledge and requisite skills necessary for career advancement as a professional tradesperson.

With an emphasis on honoring students' lifelong learning experiences and prior college credits, the BA in Construction Management Online Program offers students the opportunity to apply specialized union training, apprenticeship program knowledge, and prior college course work to complete their degree within as little as two years. All courses are delivered through Rowan Online, a nationally ranked provider of online education, to ensure a top quality online learning experiences for students.

The program is structured as follows:

- **General Education Requirements: 46 Semester Hours**
- **Electives: 38 Semester Hours**
- **Core (Major) Courses: 36 Semester Hours**

For a listing of the courses and course content please visit:

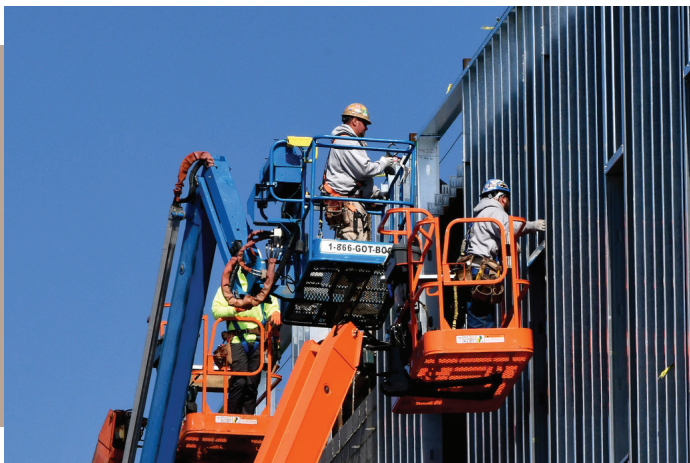
global.rowan.edu/programs/ba-in-construction-management-online.html

Convert Your Experience and Knowledge into Academic Credits

Rowan Global recognizes that many adults entering or returning to college come to the University with prior experience and college level competencies that have been developed outside the traditional college classroom. In recognition of these valued competencies, prospective students are provided with opportunities to receive undergraduate credit for prior experience and knowledge. For further information please contact 856-256-5567.

Tuition

Standard Rate: **\$400 per semester hour**



Contact Us

For more information please contact:

Alejandro Rodriguez, D.Eng. Interim Program Manager

rodriguezal@rowan.edu

Office: 856 -256-5638 | Cell: 954-299-7274

global.rowan.edu